

bonga

STRETCHTENT



10M X 8,5M PART LIST

STANDARD PARTS

These parts are included in the Standard 10m x 8,5m Bonga Stretchtent

DESCRIPTION	SIZE	MATERIAL	QUANTITY
CANVAS	10m x 8,5m	fabric	1
SIDE CLAMPS + GRIP	10cm x 11 cm x 10cm	reinforced polymere	14+2
CORNER CLAMPS + GRIP	10cm x 11 cm x 10cm	reinforced polymere	4
POLECAPS	9cm x 5cm	reinforced polymere	9
WOOD ADAPTORS	4cm x 4,5cm	reinforced polymere	9
PEGS for lawn and clay	50 cm	galvanised steel	22
STRAPS	lenght: 4 meter	nylon, galvanised steel	22
BAG PVC		PVC	2

OPTIONAL PARTS

These parts are available on demand. (NOT INCLUDED IN STANDARD TENT)

SET OF ALUMINIUM POLES

DESCRIPTION	SIZE	MATERIAL	QUANTITY
POLE 110CM	110cm x 40mm diameter	aluminium extrusion	42
POLE 50CM	50cm x 40mm diameter	aluminium extrusion	8
CONNECTOR	20cm x 40mm	aluminium extrusion	30
POLE FEET	60mmx 40mm	reinforced polymere	20

TENT PARTS: DETAILS

SIDE CLAMP

The Bonga Stretchtent uses side clamps to hold the tent. You can put them on the reinforced zones every meter in the side seams of the tent

Material: reinforced polymere

Size: 11cm x10cm x 10cm

Weight: 300gr

Galvanized steel nut, bolt and ring



The side clamps have a grip on the bottom side: you can slide a pole of 40mm diameter on the grip



If you remove the grip and put back the M8 nut, you can use this configuration to simply slide it on a wooden pole

STRAPS

The straps connect the clamps with the pegs

Material: nylon and galvanized steel

Size: 4m x 30mm

Weight: 190gr



CORNER CLAMP

The Bonga Stretchtent uses 4 corner clamps to hold the tent.

Material: reinforced polymere

Size: 11cm x10cm x 10cm

Weight: 300gr

Galvanized steel nut, bolt and ring



The corner clamps have a grip on the bottom side: you can slide a pole of 40mm diameter on the grip



If you remove the grip and put back the M8 nut, you can use this configuration to simply slide it on a wooden pole

POLECAPS/ MUSHROOM

This cap is used to put at the end of the CENTER POLES, to protect the canvas.

Material: reinforced polymere

Size: 90mm x 50mm

Weight: 110gr



You can slide aluminium standard poles of 40mm and 60mm into the pole cap



If you use wooden poles, you can use the wood adaptors delivered with your tent to fix a pole cap on a wooden pole

WOOD ADAPTOR

You only need this adaptor if you want to use wooden CENTER POLES.

It is used to fix a pole cap on a wooden pole.

Material: reinforced polymere

Size: 40mm x 45mm

Weight: 100gr



LAWN AND CLAY PEGS

We deliver standard pegs for lawn and clay of 50cm

Material: galvanised steel

Size: 50cm x 70mm x 20mm

Weight: 450gr

With the



OPTIONAL PARTS

These parts are available on demand. (NOT INCLUDED IN STANDARD TENT)

SET OF ALUMINIUM POLES



- diameter 40 mm
- includes: poles of 110 cm
poles of 50 cm
adaptors to connect poles in between
polefeet
- modular and compact
- in a heavy PVC bag
- pole feet (can be used for poles 40 diameter and 60 diameter)

XL POLE CAP



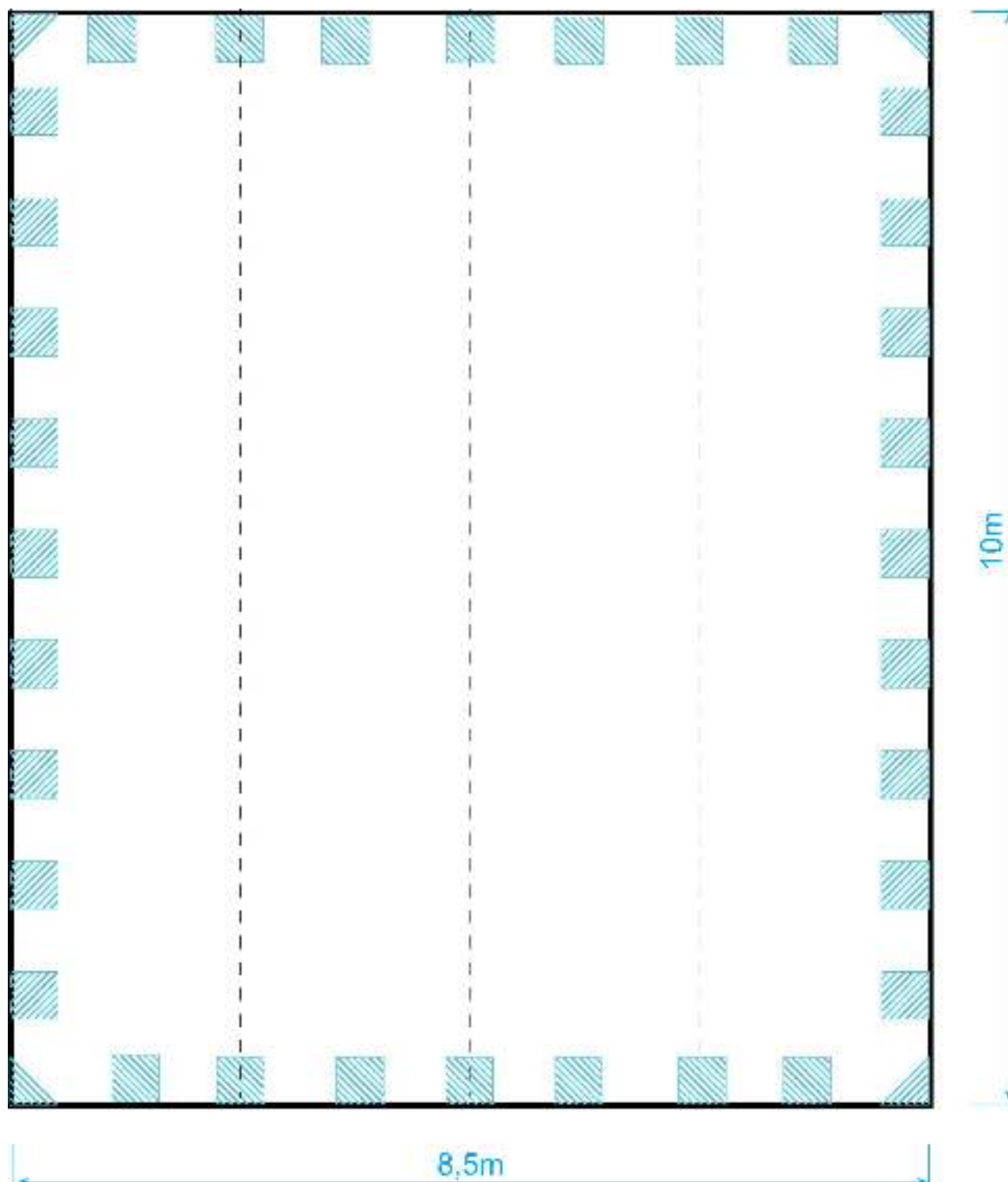
- extra wide polecap
- used for large tents
- sizes: diameter: 19 cm height: 5 cm
- fits for poles of 40mm diameter and 60mm diameter or with woodadaptor on wooden poles

REINFORCED ZONES ON 10M X 8,5M

Warning: Only put the side fixings on the reinforced zones!



See setup instructions.



OVERALL INSTRUCTIONS

ALWAYS PUT A CLAMP AT LEAST EVERY 2 METER ON A REINFORCED ZONE



NEVER USE STRAPS WITH RATCHETS, USE THE STRAPS DELIVERED WITH THE TENT



WASHING INSTRUCTIONS

Use a jetwasher. Never go closer then 20cm!

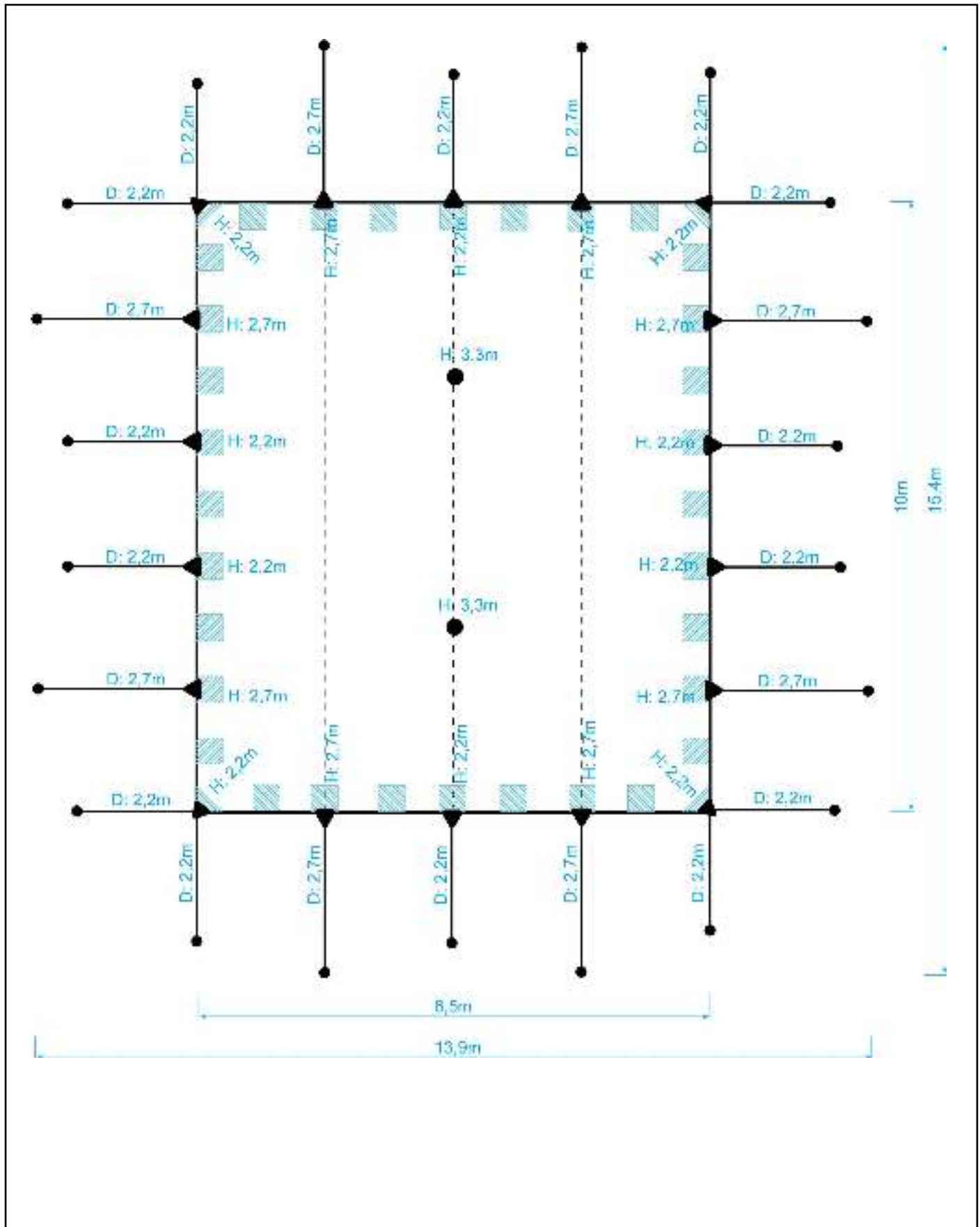
Use a soft brown/black soap with a soft sponge to remove stains

Never use acetone / thinner or any kind of solvent

SETUP OPTION 10M X 8,5M: 4 SIDES OPEN

This is a recommended setup option to start with
H= Height of the pole
D= Distance from pole to peg

Warning: Only use when less then 85 kmph



SETUP OPTION 10M X 8,5M: 1 SIDE CLOSED

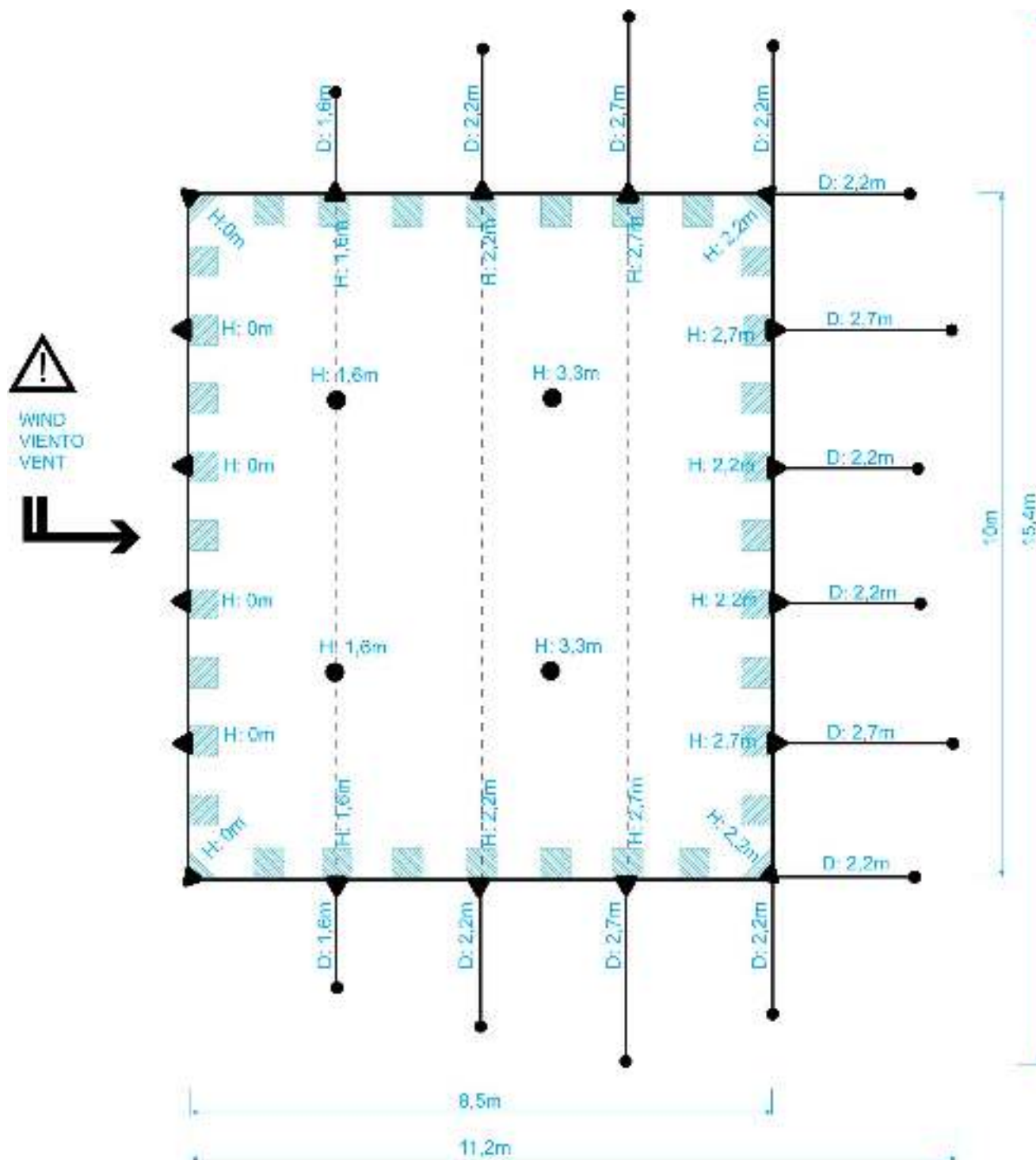
This is a recommended setup option to start with

Warning: Only use when less then 85 kmph

H= Height of the pole

Put the closed side in the direction of the wind

D= Distance from pole to peg



SETUP: STEP 1

PROTECT YOUR TENT

Unfold a plastic groundsheet to prevent stains



Unfold the tent on the plastic groundsheet



RIGHT SIDE UP

The tent is always delivered with the corner fixings attached.

When you unfold the tent, the grips of the corner fixings should face the ground.

Warning: always make sure the grip is well tightened! Check before you put up the tent!

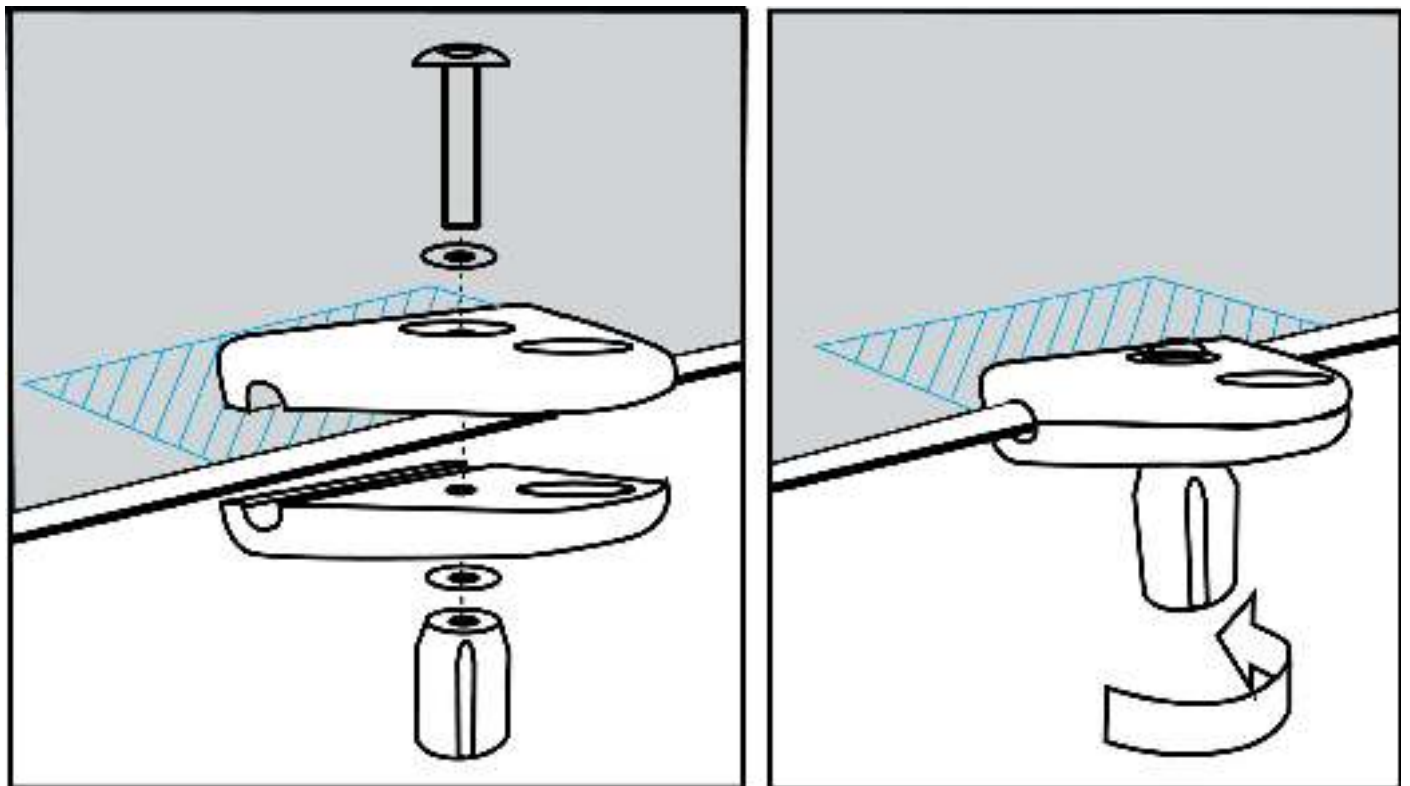


SETUP: STEP 2

ATTACH THE SIDE CLAMPS

Take the plan 'REINFORCED ZONES' delivered with this tent to guide you further

Only put the side clamps on the reinforced zones! You can see and feel them when you go over the canvas. Always make sure the grip is well tightened! Check before you put up the tent!



ATTACH THE STRAPS TO THE CLAMPS



SETUP: STEP 3

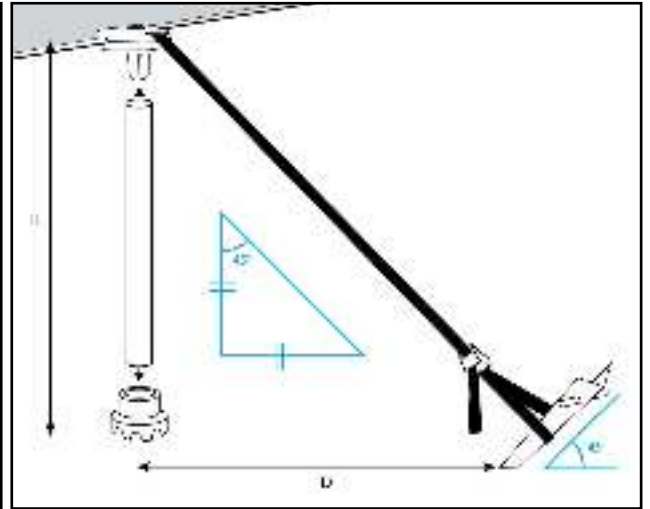
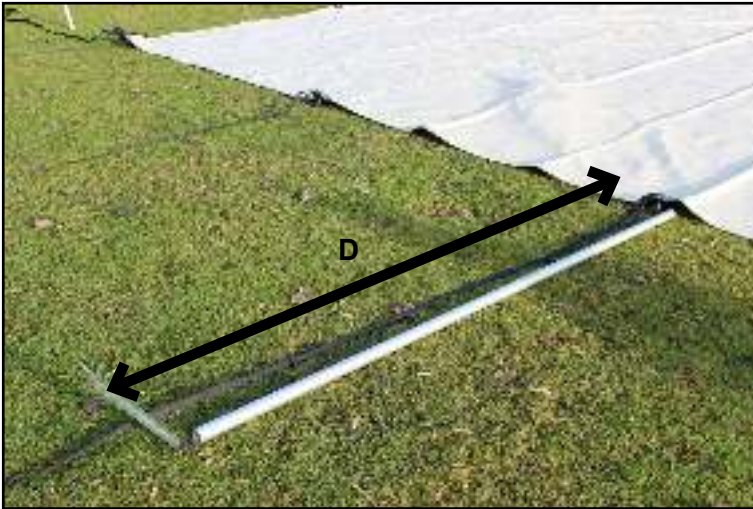
PUT THE PEGS

The Bonga Stretchtent is standard delivered with pegs for lawn and clay.

If you have another surface, please use the suitable pegs! (to find in section 'optional parts')

The distance (D) of the pegs from the tent is equal to the height (H) of the pole you will use ($H=D$).

The pegs should be placed under an angle of 45° for optimal grip and force resistance.



ATTACH THE STRAPS BETWEEN THE PEGS AND THE FIXINGS

Make the tension on the straps very loose.



SETUP: STEP 4

USE OF WOODEN POLES (turn you page if you use aluminium standard poles)

If you wish to use wooden poles on the sides follow these instructions:

1.
make a
hole in
the top of
your pole
of 13mm
diameter
and 60mm
deep



2.
unscrew
the grip



3.
put back
the extra
long M8
nut



4.
slide the
screw
into the
hole of the
wooden
pole



If you wish to use wooden poles on the corners follow these instructions:

1.
make a
hole in
the top of
your pole
of 13mm
diameter
and 60mm
deep



2.
unscrew
the grip



3.
put back
the extra
long M8
nut



4.
slide the
screw
into the
hole of the
wooden
pole



SETUP: STEP 4

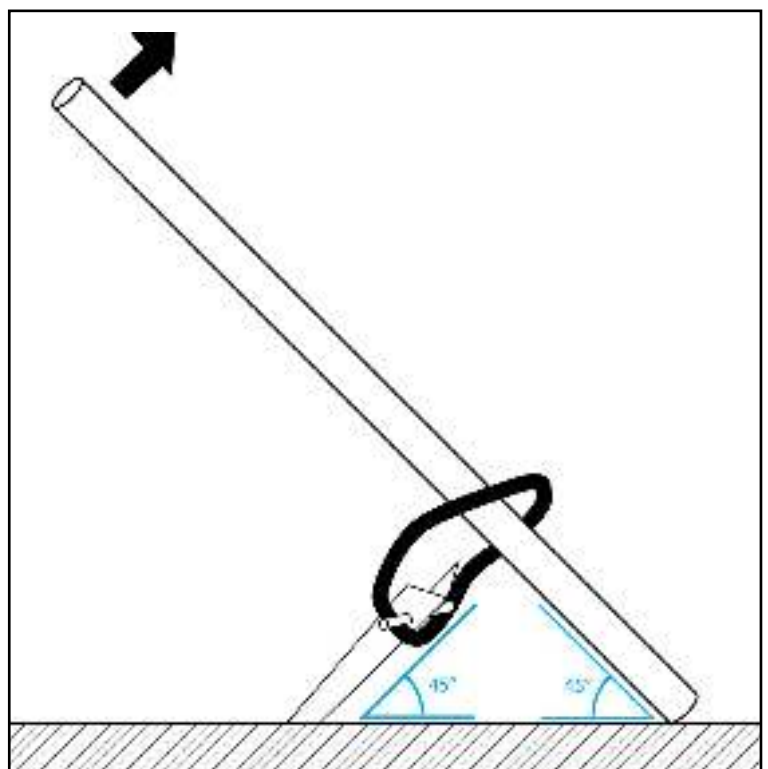
USE OF ALUMINIUM POLES 40MM DIAMETER

Slide the grip into the aluminium pole of 40 diameter



SUGGESTION: REMOVE PEGS EASILY

Do you want to remove a peg? Use this system. Take a wooden or aluminium pole from +/- 2m, attach a short strap around it. Attach the strap to the peg and push the top of the pole upwards.



SETUP: STEP 5

PUT UP THE SIDE POLES

Put up the 4 corners. Adjust the straps so they are still quite loose.



Put up 2 opposite sides. Always choose the sides in the direction of the wind. It will help you!



Don't put too much tension on the straps! Just a little, so the canvas is off the ground.

Put up the 2 other sides



PUT THE POLE CAP ON THE CENTER POLES

If you use aluminium poles of 40mm diameter or 60mm diameter, you can easily slide them on the poles.



If you use wooden poles, you can follow these steps:

1. make a hole in the wood, screw the wood adaptor onto the wooden pole
2. slide the pole cap over it.



PUT THE CENTER POLES

Warning: Never put a center pole without a polecap!



Start with the side poles of the tent. Keep the center poles always for last.



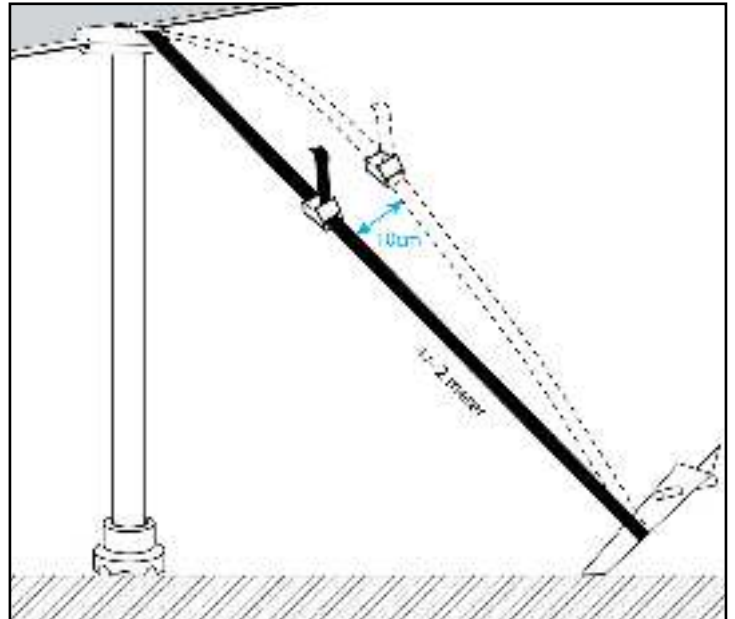
THE 'PERFECT' TENSION

THE 'PERFECT' TENSION

HOW DO YOU MEASURE THE 'PERFECT' TENSION?

If you are still able to move a strap of 2meters, 10cm back and forth with your fingers, the tension is 'perfect'. If you cannot do that, you have put too much tension on the tent.

Warning: Never put too much tension on the tent! It can damage your tent. Never use straps with ratchets



You can also put extra side clamps in the line of the welded seams. It is in any case always a good idea to put the clamps at the end of the welded seams, it will give you less 'wrinkles'.

